



Product Name LED surface spotlight

Style Modern

Specification White,Black

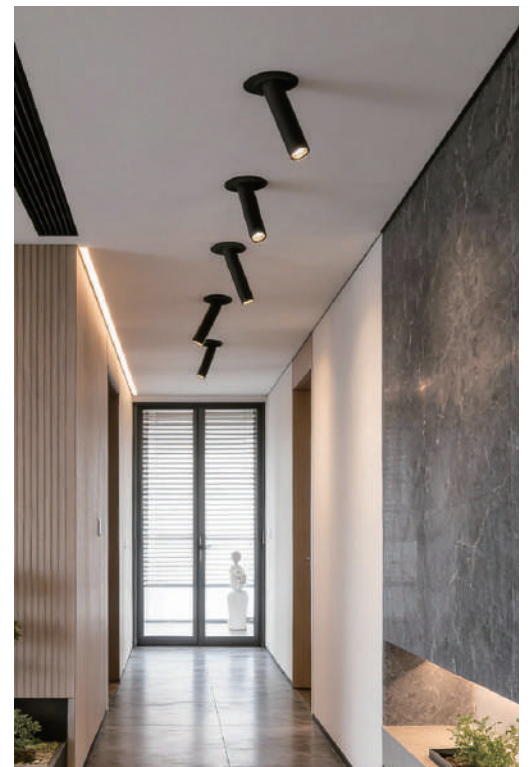
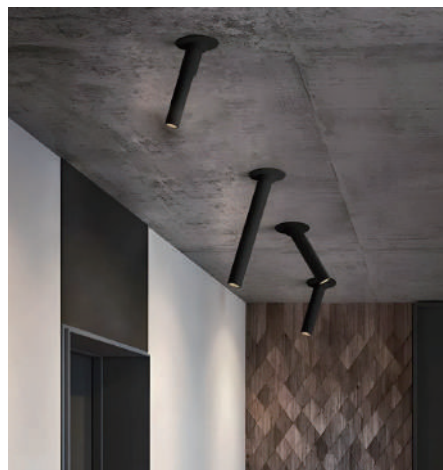
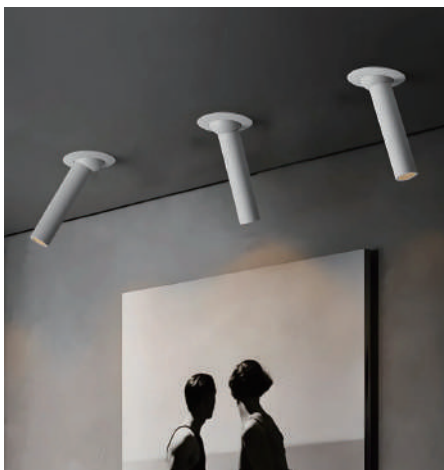


This LED surface spotlight has a slim cylindrical aluminum body in white or black.

It supports 60° rotation for precise lighting direction.

With a 7W CRI90 COB LED and 15° narrow beam angle, it offers 3 color temperatures: warm, neutral and cool white.

It comes in 3 heights and can be used individually or in groups, ideal for highlighting artworks, walls and commercial displays with professional light and shadow layers.



· Basic Product Information



| | |
|---------------|--------------------|
| Product Model | HA106374 |
| Product Type | Directional Lights |
| Power Type | Hardwired |
| Product Color | White |

· Product Details

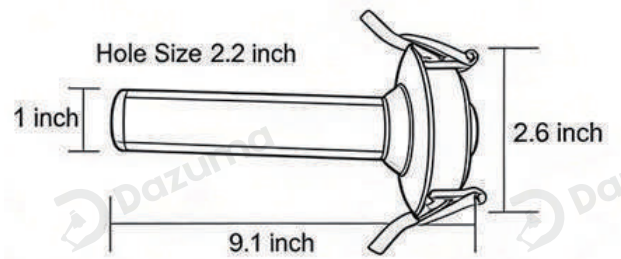
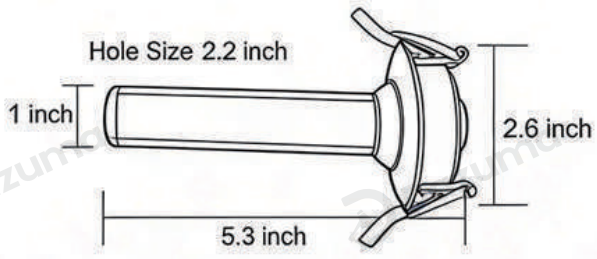
| | |
|----------|----------|
| Material | Aluminum |
|----------|----------|



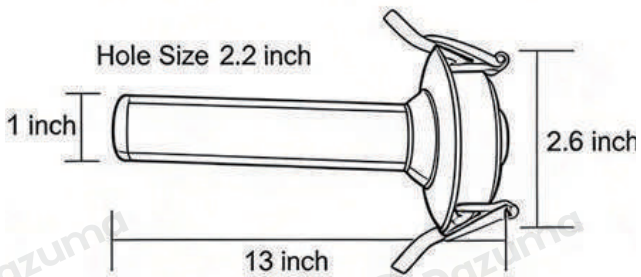
· **Core Specifications**

Length 2.6 inches
 Width 1 inches
 Depth 5.3 inches

Length 2.6 inches
 Width 1 inches
 Depth 9.1 inches

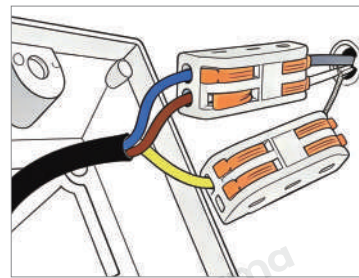


Length 2.6 inches
 Width 1 inches
 Depth 13 inches



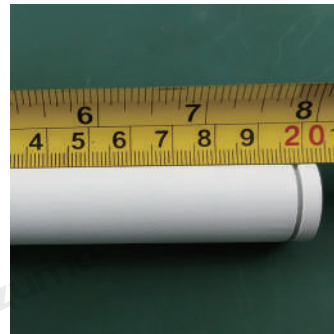


| | |
|-----------------------|--------------------|
| Voltage | AC110V |
| Light Source Type | Integrated COB LED |
| Light Source Included | Yes |
| Color Temperature | 3000- 6000K |
| Dimmable | Yes |
| CRI | 90 |
| IP Rating | IP20 |
| Hardwired | |



Blue: Neutral wire
 Brown: Live wire
 Yellow: Ground wire

· Core Performance Indicators



| | |
|------------------------------|--|
| Installation Method | Ceiling Mounted-Cut a hole in ceiling/board, insert the fixture, only light surface exposed. |
| Application Scenarios | Bedroom,Dining Room,Home Office,Kitchen,Living Room |
| Certifications | CE, ROHS, WEEE, CEC, DLC, IES |
| Color Temperature Adjustment | Neutral (4000K), Warm White (3000K), White (6000K) |
| Product Accessories | Fixture ×1 |



www.dazuma.us

+1 978-678-4855 (US Support)

hello@dazuma.us

Customer Service: Mon-Fri, 9am-6pm EST.

Online Service Team: 120 East Hollis Street, Nashua, NH 03060