



Product Name Moon pillar lights

Style Modern

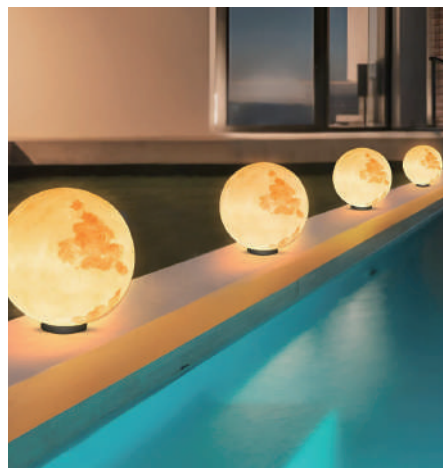
Specification Hardwired / Solar



This moon pillar light is made of resin and fiber composite materials, accurately restoring the moon's surface texture and gradual light-shadow effect. It comes in three diameter sizes to suit different landscape scales.

It offers two power modes—solar or hardwired—with 3000K warm white light.

Suitable for installation on garden paths, courtyard lawns, terrace edges or landscape belts.



· Basic Product Information



Product Model

LI001959

Product Type

Pillar Lights

Power Type

Hardwired,Solar

· Product Details

Material

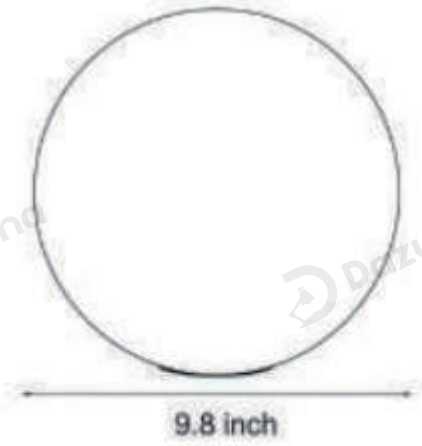
Resin+Fiber



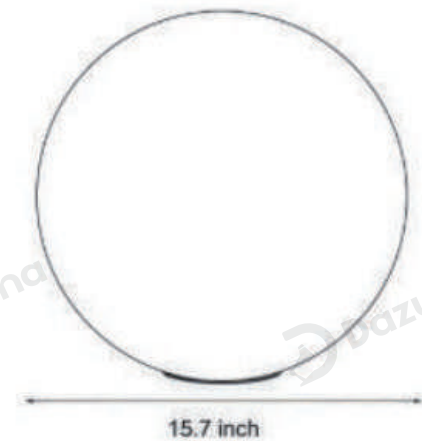
· Core Specifications

Width	9.8 inches
Depth	9.8 inches
Height	9.8 inches

Width	11.8 inches
Depth	11.8 inches
Height	11.8 inches



Width	15.7 inches
Depth	15.7 inches
Height	15.7 inches





Voltage AC110V

Light Source Type LED

Light Source Included Yes

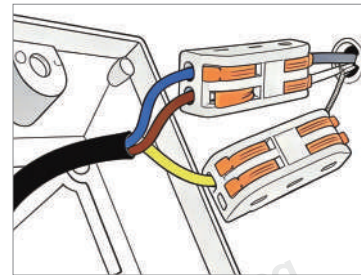
Color Temperature 3000K

Dimmable No

CRI 90

IP Rating IP65

Hardwired

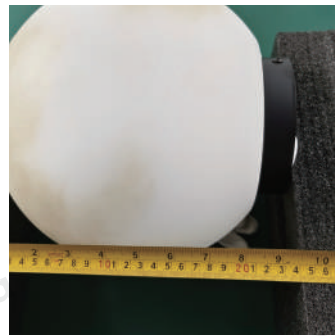


Blue: Neutral wire

Brown: Live wire

Yellow: Ground wire

• Core Performance Indicators



Installation Method

Post Top Mounted-Fix the lamp base on top of the post/pillar with screws, wire then install the lampshade.

Application Scenarios

Outdoor

Certifications

CE, ROHS, WEEE, CEC, DLC, IES

Color Temperature Adjustment

Warm White (3000K)

Product Accessories

Lamp body ×1, screw pack ×1, instruction manual ×1



www.dazuma.us

+1 978-678-4855 (US Support)

hello@dazuma.us

Customer Service: Mon-Fri, 9am-6pm EST.

Online Service Team: 120 East Hollis Street, Nashua, NH 03060