



Product Name Wall sconce up and down light

Style Modern

Specification 4-Light / 5-Light / 6-Light



This up-and-down wall lamp features an ABS lamp body and is available in 4-light, 5-light and 6-light configurations.

It is equipped with a high-efficiency built-in solar system, which can be charged for 7-8 hours and supports 12 hours of 3000K warm light illumination with a stable 2200mAh battery capacity.

IP65 waterproof certification ensures long-term outdoor use, and no wiring is required – simply install it on a sunny wall.





## · Basic Product Information



Product Model	LI002302-01B
Product Type	Up & Down Wall Lights
Power Type	Solar Powered
Product Color	Black

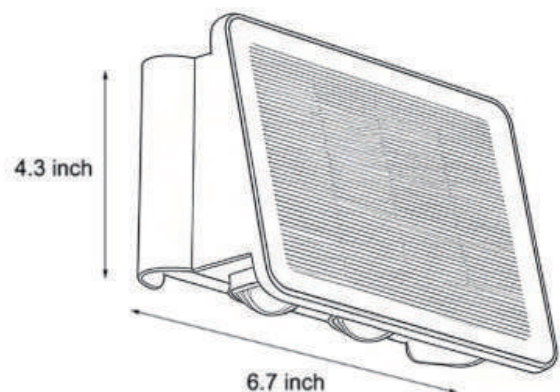


## · Product Details

Material	ABS
----------	-----

## · Core Specifications

Width	4.3 inches
Depth	6.7 inches
Height	3.1 inches



## · Basic Product Information



Product Model	LI002302-02B
Product Type	Up & Down Wall Lights
Power Type	Solar Powered
Product Color	Black

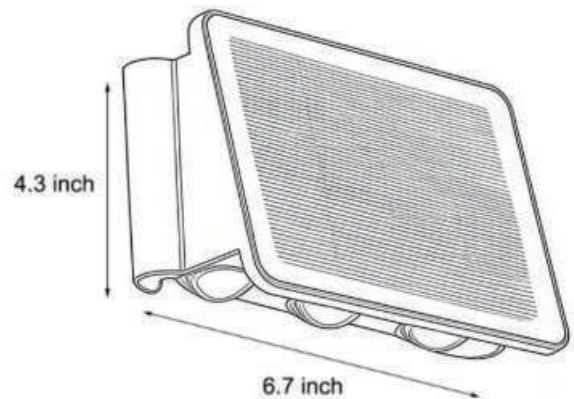


## · Product Details

Material	ABS
----------	-----

## · Core Specifications

Width	4.3 inches
Depth	6.7 inches
Height	3.1 inches





## · Basic Product Information



Product Model	LI002302-03B
Product Type	Up & Down Wall Lights
Power Type	Solar Powered
Product Color	Black

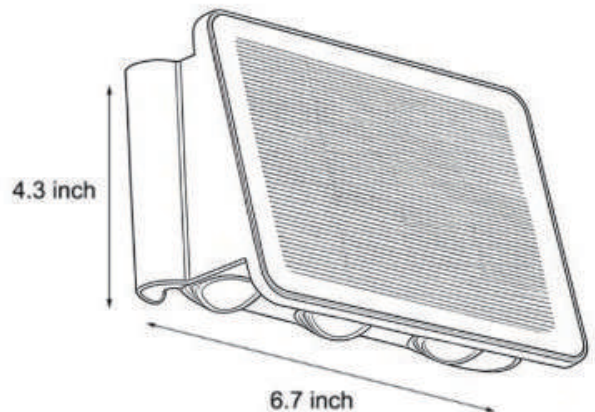


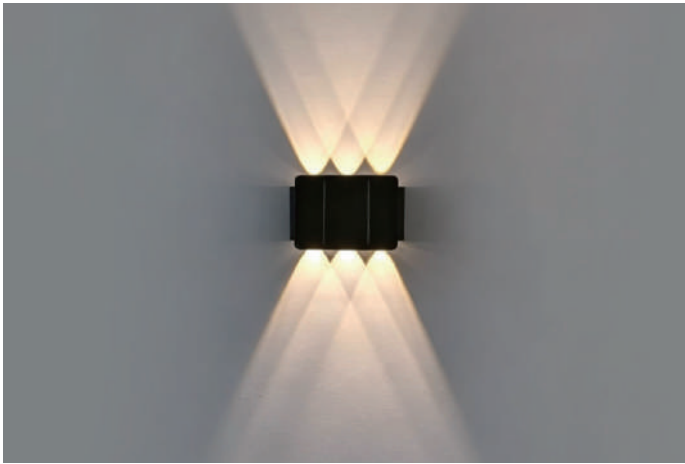
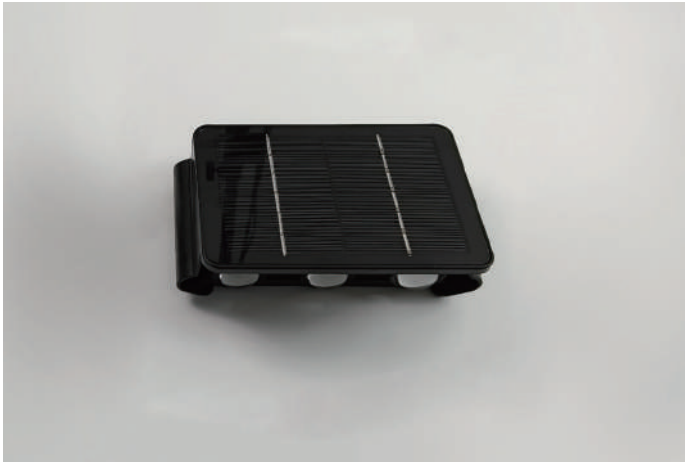
## · Product Details

Material	ABS
----------	-----

## · Core Specifications

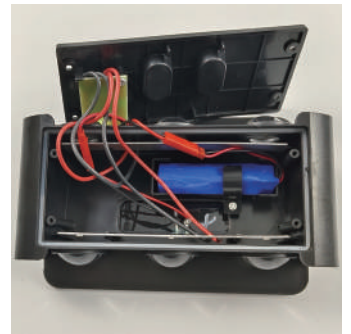
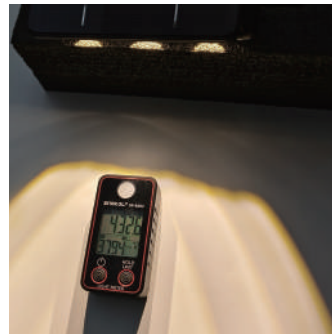
Width	4.3 inches
Depth	6.7 inches
Height	3.1 inches





Light Source Type	LED light strip
Light Source Included	Yes
Color Temperature	3000K
Dimmable	No
CRI	90
IP Rating	IP65

### · Core Performance Indicators



Installation Method

Wall Mounted-Fix the base on the wall, wire then install the lamp body.

Application Scenarios

Balcony,Garden

Certifications

CE, ROHS, WEEE, CEC, DLC, IES

Color Temperature Adjustment

Warm White (3000K)

Product Accessories

Lamp body ×1, manual ×1, mounting positioning plate ×1, screw pack ×1