



Product Name Glass Flower Sconce

Style American Style

Specification 6-Light / 10-Light



This American country-style glass flower sconce is nature-inspired with a vintage and elegant bouquet design, composed of glass flowers and antique wrought iron leaf decorations. It comes in 6-light and 10-light models for flexible selection according to your needs.

Three glass flower options are available: frosted white glass, clear glass and pink glass, catering to different tastes and home style preferences.

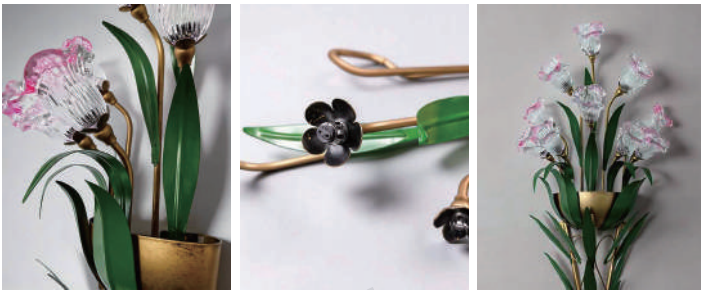
Whether your decor is modern minimalist or classic vintage, this wall sconce blends seamlessly into any interior.



· Basic Product Information



Product Model	LI002852-01B/02B/03B
Product Type	Diffused Light Wall Sconces
Power Type	Hardwired
Product Color	Pink

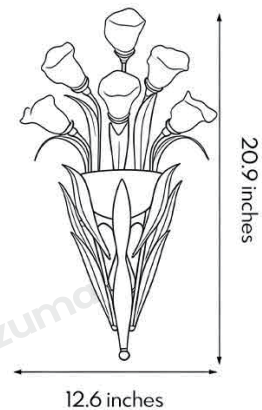


· Product Details

Material	Iron, Glass
----------	-------------

· Core Specifications

Length	12.6 inches
Width	12.6 inches
Depth	20.9 inches



· Basic Product Information



Product Model	LI002852-04B/05B/06B
Product Type	Diffused Light Wall Sconces
Power Type	Hardwired
Product Color	Pink

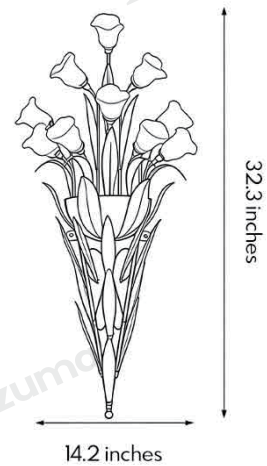


· Product Details

Material	Iron, Glass
----------	-------------

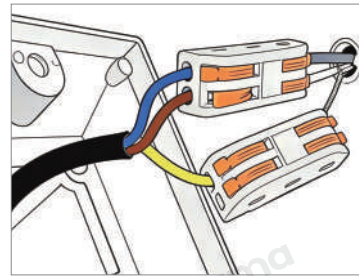
· Core Specifications

Length	14.2 inches
Width	14.2 inches
Depth	32.3 inches



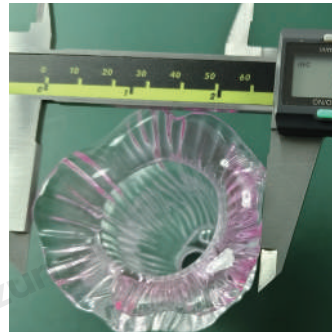


Voltage	AC110V
Light Source Type	LED G4 light source
Light Source Included	Yes
Color Temperature	3000K
Dimmable	No
CRI	90
IP Rating	IP65
Hardwired	



Blue: Neutral wire
Brown: Live wire
Yellow: Ground wire

• Core Performance Indicators



Installation Method

Wall Mounted-Fix the base on the wall, wire then install the lamp body.

Application Scenarios

Indoor

Certifications

CE, ROHS, WEEE, CEC, DLC, IES

Color Temperature Adjustment

Warm White (3000K)

Product Accessories

Lamp body ×1, Lampshade ×10, Screw pack ×1



www.dazuma.us

+1 978-678-4855 (US Support)

hello@dazuma.us

Customer Service: Mon-Fri, 9am-6pm EST.

Online Service Team: 120 East Hollis Street, Nashua, NH 03060