



Product Name Ribbon Pendant Light

Style Modern

Specification 39.4" / 47.2"



This ribbon chandelier is crafted from high-quality acrylic and aluminum, featuring a smooth ribbon-style wave design. It is available in two sizes to meet different lighting needs.

Equipped with energy-saving and high-brightness LED lights, the fixture delivers excellent color rendering and creates a bright and cozy home atmosphere.

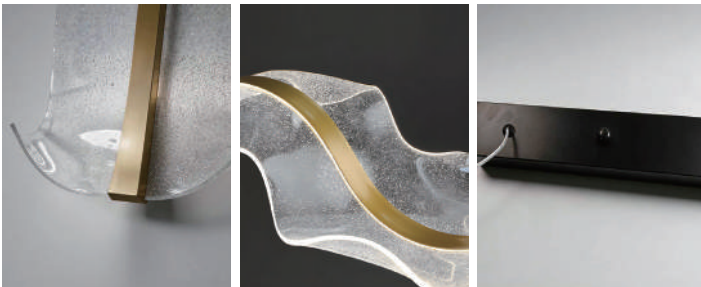
It provides outstanding illumination while serving as a beautiful decorative accent during the day.



· Basic Product Information



| | |
|---------------|-------------------|
| Product Model | LI002962-01B |
| Product Type | Linear Suspension |
| Power Type | Hardwired |
| Product Color | Black + Gold |

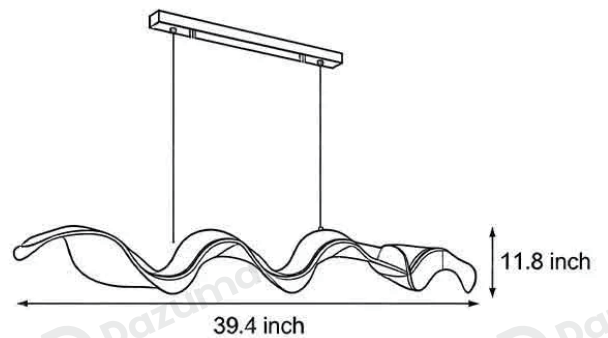


· Product Details

| | |
|----------|--------------------|
| Material | Aluminum + Acrylic |
|----------|--------------------|

· Core Specifications

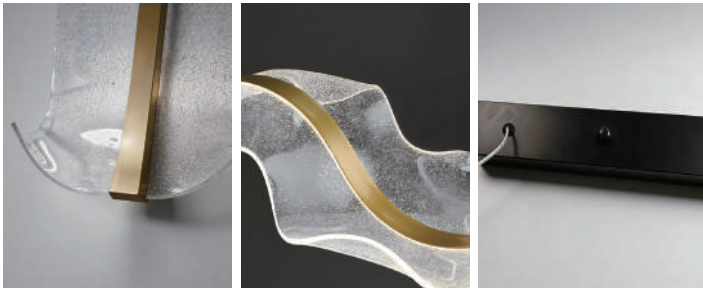
| | |
|--------|-------------|
| Width | 11.8 inches |
| Depth | 39.4 inches |
| Height | 11.8 inches |



· Basic Product Information



| | |
|---------------|-------------------|
| Product Model | LI002962-02B |
| Product Type | Linear Suspension |
| Power Type | Hardwired |
| Product Color | Black + Gold |

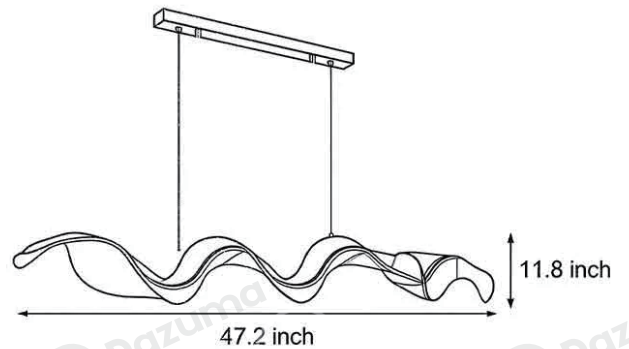


· Product Details

| | |
|----------|--------------------|
| Material | Aluminum + Acrylic |
|----------|--------------------|

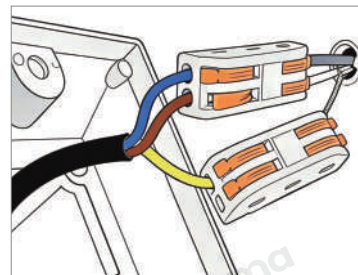
· Core Specifications

| | |
|--------|-------------|
| Width | 11.8 inches |
| Depth | 47.2 inches |
| Height | 11.8 inches |



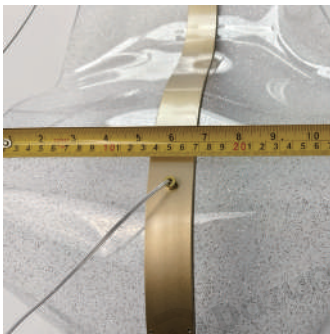


| | |
|-----------------------|-----------------|
| Voltage | AC85-265V |
| Light Source Type | LED light strip |
| Light Source Included | Yes |
| Color Temperature | 4000K |
| Dimmable | No |
| CRI | 90 |
| IP Rating | IP65 |
| Hardwired | |



Blue: Neutral wire
Brown: Live wire
Yellow: Ground wire

• Core Performance Indicators



Installation Method

Ceiling Pendant Mounted - Fix the ceiling canopy to the ceiling, suspend the lamp body with cord, wire then install the lampshade.

Application Scenarios

Dining Room

Certifications

CE, ROHS, WEEE, CEC, DLC, IES

Color Temperature Adjustment


Neutral (4000K)

Product Accessories


Lamp body ×1, Base box ×1, Instruction manual ×1, Screw pack ×2




 www.dazuma.us

 +1 978-678-4855 (US Support)

 hello@dazuma.us

 Customer Service: Mon-Fri, 9am-6pm EST.

 Online Service Team: 120 East Hollis Street, Nashua, NH 03060